

**PIANO DI RECUPERO
ZONA PR4**

via Roma

PROPRIETÀ
ANGAROMO Maddalena

DEMCA srl

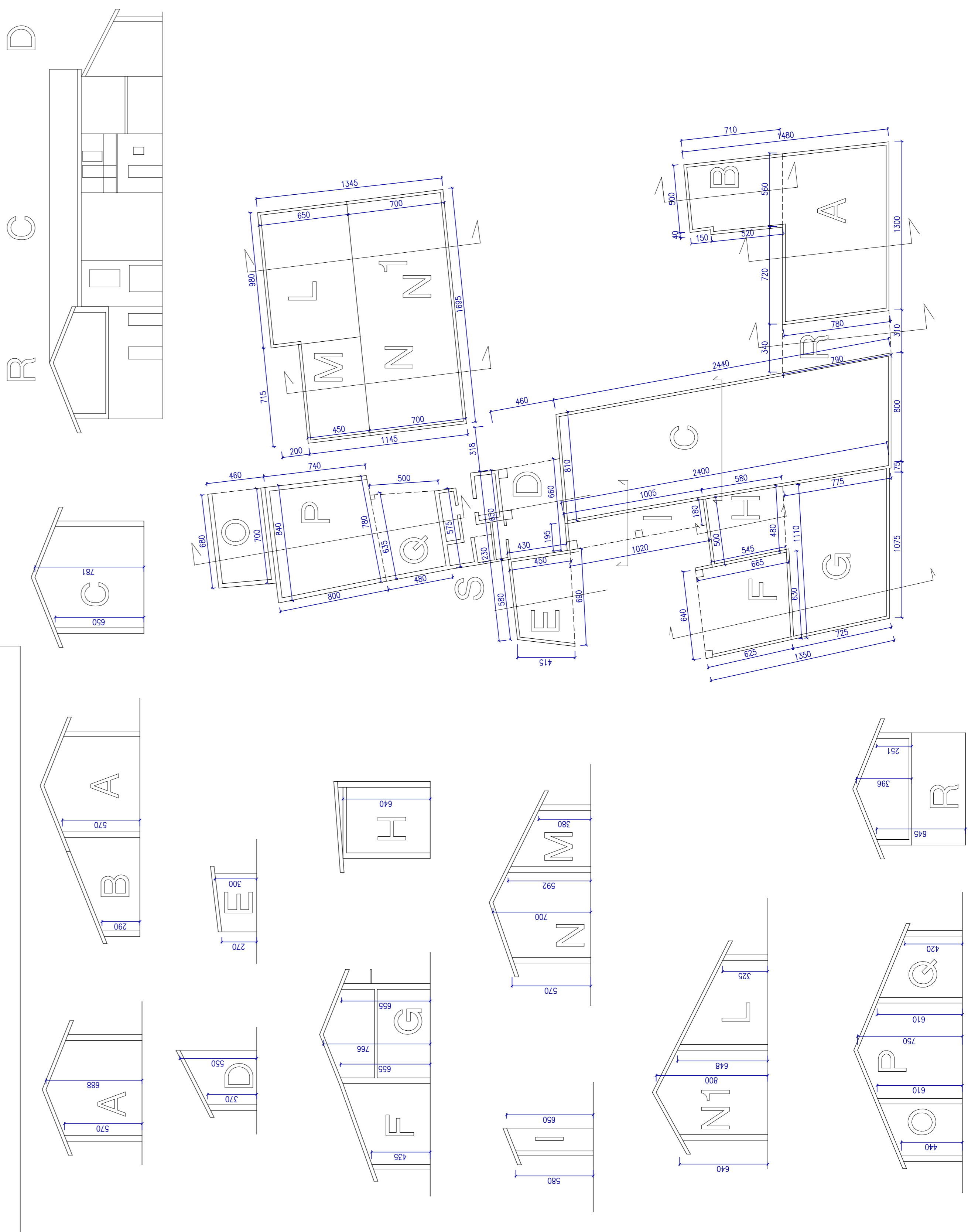
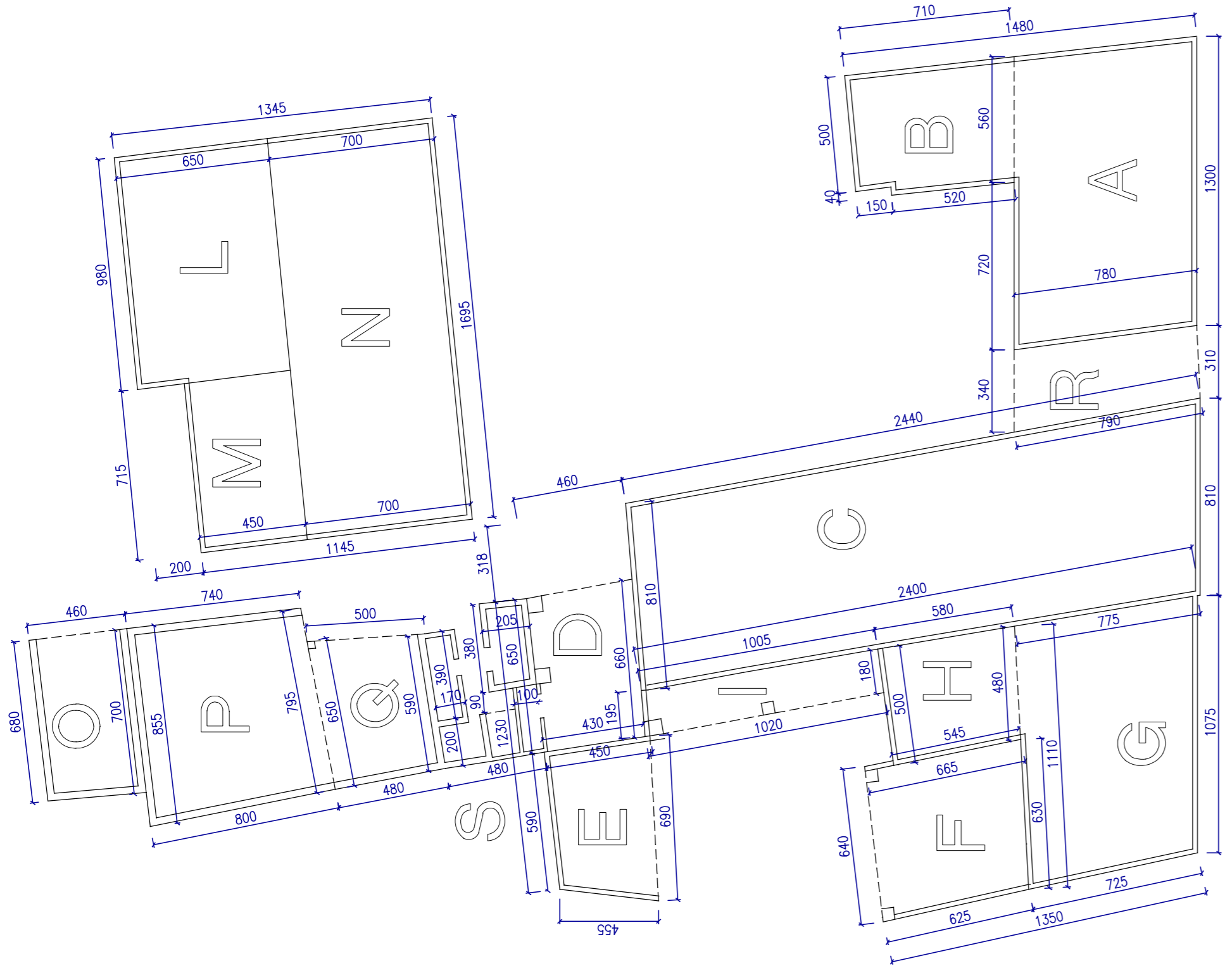
Oggetto disegno:
CALCOLI PLANOVOLUMETRICI

Scala: 1:100
Unità di misura: cm

Data: 30 marzo 2016

TAVOLA
6

**REGIONE PIEMONTE
PROVINCIA DI CUNEO
COMUNE DI MORETTA**



VOLUMETRIA ESISTENTE

- A = mq. 100,62 x 5,70 = mc. 573,53
- B = mq. 37,35 x 2,80 = mc. 106,32
- C = mq. 196,02 x 6,50 = mc. 1274,13
- D = mq. 29,15 x 3,70 = mc. 107,86
- E = mq. 28,96 x 2,70 = mc. 78,19
- F = mq. 40,96 x 4,35 = mc. 178,18
- G = mq. 81,94 x 6,55 = mc. 536,71
- H = mq. 27,56 x 6,40 = mc. 176,38
- I = mq. 18,90 x 5,80 = mc. 109,62
- L = mq. 63,70 x 3,25 = mc. 207,03
- M = mq. 32,18 x 3,80 = mc. 122,28
- N = 7,15 x 7,00 x 5,70 = mc. 285,29
- NI = 9,80 x 7,00 x 6,40 = mc. 438,04
- O = mq. 31,74 x 4,40 = mc. 139,66
- P = mq. 63,53 x 6,10 = mc. 387,53
- Q = mq. 30,38 x 4,20 = mc. 127,60
- R = mq. 25,51 x 6,45 = mc. 164,54
- S = mq. 24,92 x 2,35 = mc. 58,56

Totale = mc 5074,45

SUPERFICIE COPERTA ESISTENTE

- A = (13,00 + 12,80) / 2 x 7,80 = mq. 100,62
- B = (7,10 + 6,70) / 2 x (5,60 + 5,40) / 2 - (1,50 x 0,40) = mq. 37,35
- C = (24,40 + 24,00) / 2 x 8,10 = mq. 196,02
- D = (4,60 + 4,30) / 2 x (6,50 + 6,60) / 2 = mq. 29,15
- E = (6,90 + 5,90) / 2 x (4,55 + 4,50) / 2 = mq. 28,96
- F = (6,40 + 6,30) / 2 x (6,25 + 6,65) / 2 = mq. 40,96
- G = (10,75 + 11,10) / 2 x (7,25 + 7,75) / 2 = mq. 81,94
- H = (4,80 + 5,00) / 2 x (5,45 + 5,80) / 2 = mq. 27,56
- I = (10,20 + 10,05) / 2 x (1,80 + 1,95) / 2 = mq. 18,98
- L = 6,50 x 9,80 = mq. 63,70
- M = 7,15 x 4,50 = mq. 32,18
- N = 16,95 x 7,00 = mq. 118,65
- O = (7,00 + 6,80) / 2 x 4,60 = mq. 31,74
- P = (8,55 + 7,95) / 2 x (8,00 + 7,40) / 2 = mq. 63,53
- Q = (6,50 + 5,90) / 2 x (4,80 + 5,00) / 2 = mq. 30,38
- R = (3,40 + 3,10) / 2 x (7,80 + 7,90) / 2 = mq. 25,51
- S = 2,00 x 4,80 + 0,90 x 1,00 + 3,80 x 2,05 + 3,90 x 1,70 = mq. 24,92

Totale = mq 952,15

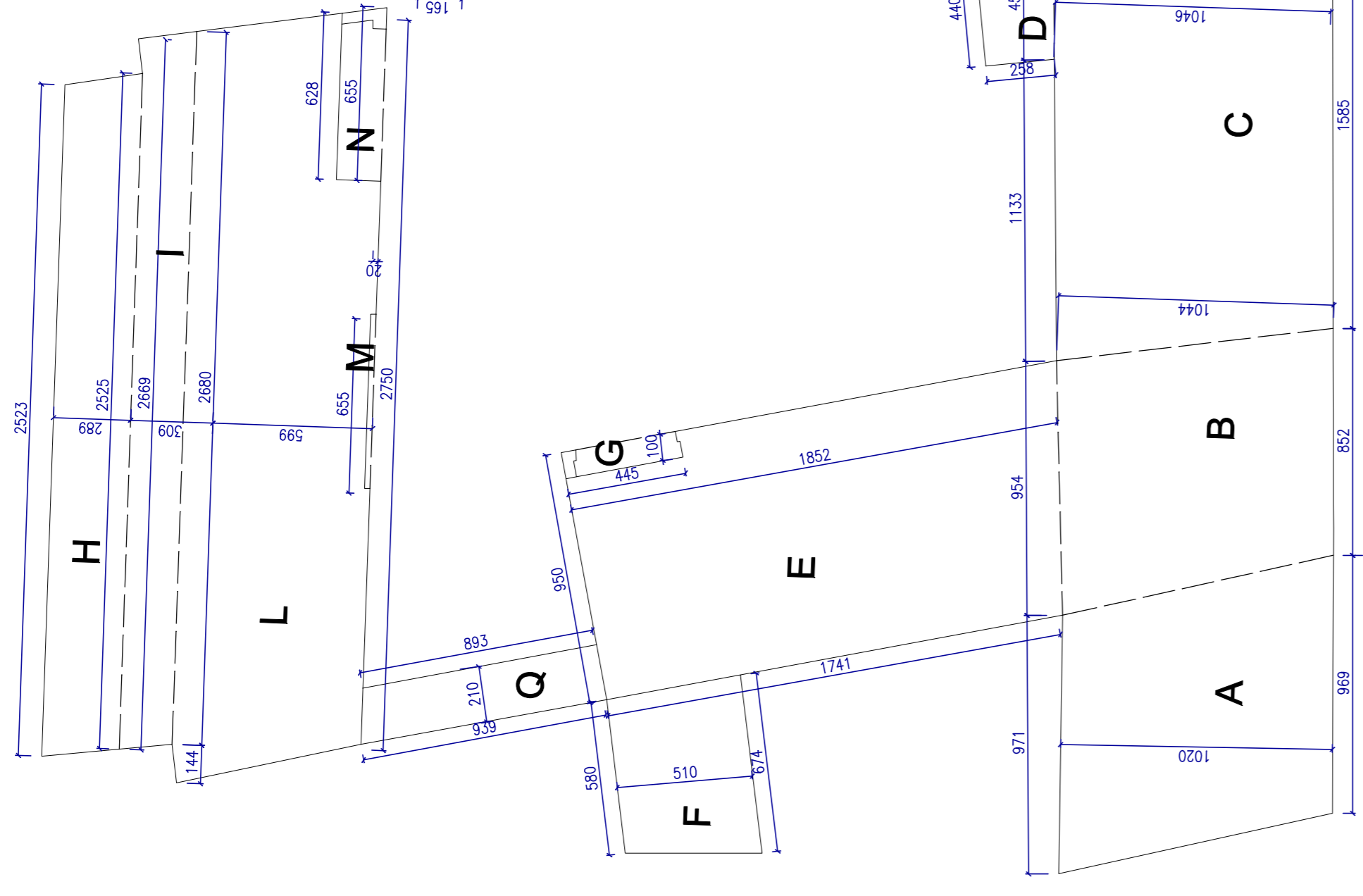
STATO ATTUALE

SUPERFICIE COPERTA ESISTENTE

- A = (13,00 + 12,80) / 2 x 7,80 = mq. 100,62
- B = (7,10 + 6,70) / 2 x (5,60 + 5,40) / 2 - (1,50 x 0,40) = mq. 37,35
- C = (24,40 + 24,00) / 2 x 8,10 = mq. 196,02
- D = (4,60 + 4,30) / 2 x (6,50 + 6,60) / 2 = mq. 29,15
- E = (6,90 + 5,90) / 2 x (4,55 + 4,50) / 2 = mq. 28,96
- F = (6,40 + 6,30) / 2 x (6,25 + 6,65) / 2 = mq. 40,96
- G = (10,75 + 11,10) / 2 x (7,25 + 7,75) / 2 = mq. 81,94
- H = (4,80 + 5,00) / 2 x (5,45 + 5,80) / 2 = mq. 27,56
- I = (10,20 + 10,05) / 2 x (1,80 + 1,95) / 2 = mq. 18,98
- L = 6,50 x 9,80 = mq. 63,70
- M = 7,15 x 4,50 = mq. 32,18
- N = 16,95 x 7,00 = mq. 118,65
- O = (7,00 + 6,80) / 2 x 4,60 = mq. 31,74
- P = (8,55 + 7,95) / 2 x (8,00 + 7,40) / 2 = mq. 63,53
- Q = (6,50 + 5,90) / 2 x (4,80 + 5,00) / 2 = mq. 30,38
- R = (3,40 + 3,10) / 2 x (7,80 + 7,90) / 2 = mq. 25,51
- S = 2,00 x 4,80 + 0,90 x 1,00 + 3,80 x 2,05 + 3,90 x 1,70 = mq. 24,92

Totale = mq 952,15

PANO TERZA

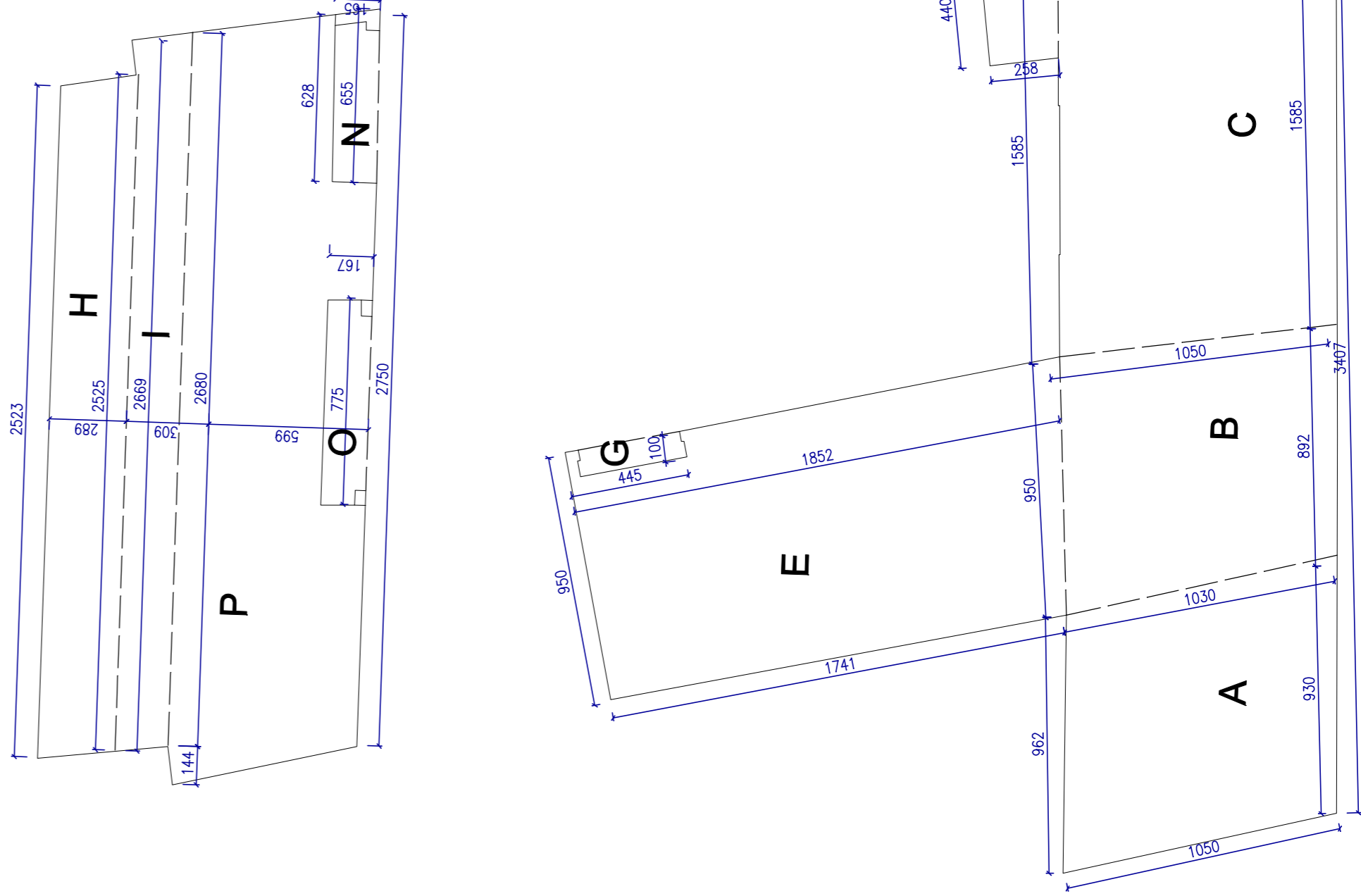


SUPERFICIE COPERTA IN PROGETTO

- A = 10,20 X (9,71 + 9,69)/2 = mq. 98,94
- B = 10,44 x (9,54 + 8,52)/2 = mq. 94,27
- C = 15,85 x 10,46 = mq. 165,79
- D = (2,98 + 2,58)/2 x 4,40 = mq. 12,23
- E = (18,52 + 17,41)/2 x 9,50 = mq. 170,67
- F = (6,74 + 5,80)/2 x 5,10 = mq. 31,98
- H = (25,23 + 25,25)/2 x 2,89 = mq. 72,94
- I = (26,69 + 26,80) /2 x 3,09 = mq. 82,64
- L = [(26,88 + 1,44) + 27,50]/2 x 5,99 = mq. 167,18
- Q = (9,39 + 8,93)/2 X 2,10 = mq. 19,24

Totale = mq. 915,88 < mq. 951,99

PANO PRIMO



VOLUMETRIA IN PROGETTO

- A = [10,20 X (9,71 + 9,69)/2] x 6,00 = mc. 593,64
- B = [10,44 x (9,54 + 8,52)/2] x 6,00 = mc. 565,62
- C = (15,85 x 10,46) X 6,00 = mc. 994,74
- E = (18,52 + 17,41)/2 x 9,50 - (0,4,45 x 1,00 = mq. 166,22 x 6,00 = mc. 997,32
- F = [(6,74 + 5,80)/2 x 5,10] x 2,70 = mc. 86,35
- H = [(25,23 + 25,25)/2 x 2,89] x 6,00 = mc. 437,64
- I = (26,69 + 26,80)/2 x 3,09] x 6,00 = mc. 495,84
- L = [[(26,80 + 1,44) + 27,50]/2 x 5,99 - (6,55 x 0,20) - (6,28 + 6,55) / 2 x 1,65] x 3,00 = mc. 465,15
- P = [[(26,80 + 1,44) + 27,50]/2 x 5,99 - (7,75 x 1,67) - (6,28 + 6,55) / 2 x 1,65] x 3,00 = mc. 430,26

Totale = mc. 5066,56 < mc. 5074,45

PROGETTO